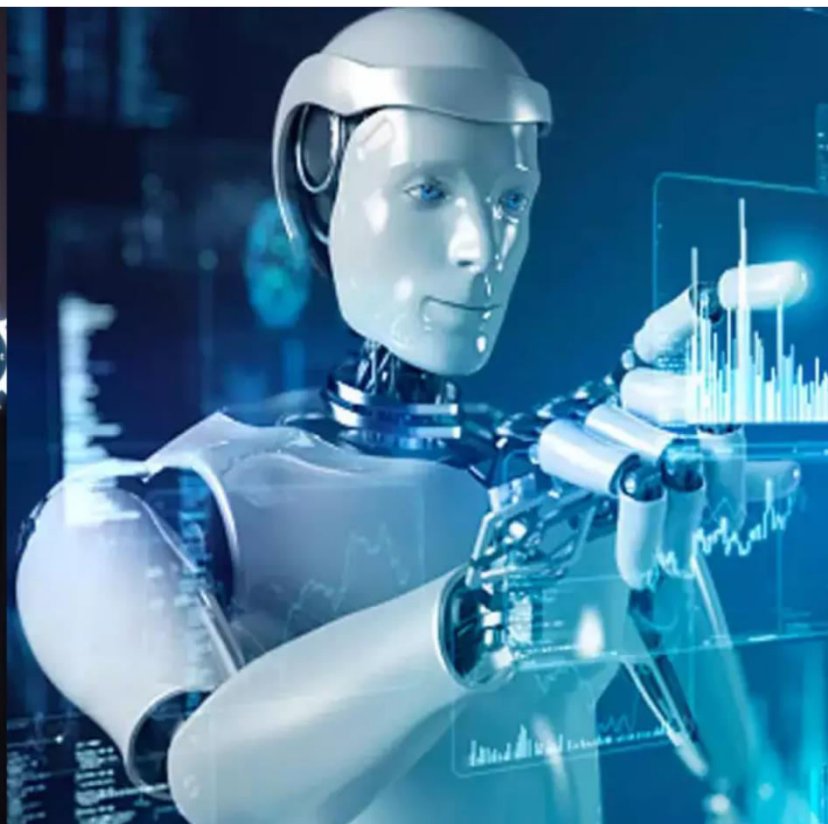




International Journal of Innovative Research in Science Engineering and Technology (IJIRSET)

(A Monthly, Peer Reviewed, Refereed, Scholarly Indexed, Open Access Journal)



Impact Factor: 8.699

Volume 15, Issue 3, March 2026

Automatic Examination Management System

V. Swetha¹, J. Sandhya², G. Navya³, B. Rakesh⁴

Assistant Professor, Department of IT (Information Technology), ACE Engineering College, Hyderabad, India¹⁻³

IV B.Tech, Department of IT (Information Technology), ACE Engineering College, Hyderabad, India⁴

ABSTRACT: The Automatic Examination Management System makes the management of invigilation in exams in colleges easier. The system automates the seating plan, the assignment of invigilation and generates the report on the seating plan. This saves one from much work and human error. Students get to know about their seating plan via the email service while administrators generate the seating report automatically. The information provided by the system is stored safely thus providing privacy. Being a web application, it makes the whole process of conducting exams simpler. Moreover, the system provides transparency to the students and invigilators as far as information is concerned. The system prevents the last minute complications that occur in the exams and facilitates coordination among the administrators. The system is user friendly and enables administrators to store large quantities of information without encountering any technical difficulty.

I. INTRODUCTION

The Automatic Examination Management System makes the process of allocating exam halls and invigilators much easier and more automated than doing everything by hand. It is highly inefficient and troublesome when you have many students and several exam halls; therefore, a mistake may happen when distributing seats, making halls overbooked and confusing invigilators as to what should they do and what is expected from them.

This project brings an efficient solution to this problem, creating a centralized system where everything would be automated, from seating to reporting. It ensures the efficient allocation of exam halls according to the available capacity and number of students. All information will be sent via email to students as to what hall will they sit at which will provide them convenient access. The invigilators will also be assigned properly by the program in order to make the examination process organized.

All information will be stored in the database in order to keep it private and prevent possible leaks or losses. There will not be any human errors made since everything will be managed by the system and, thus, there will not be too much work done manually. Its intuitive interface will help to cope with any difficulties that one might come across when working with it.

II. EXISTING SYSTEM

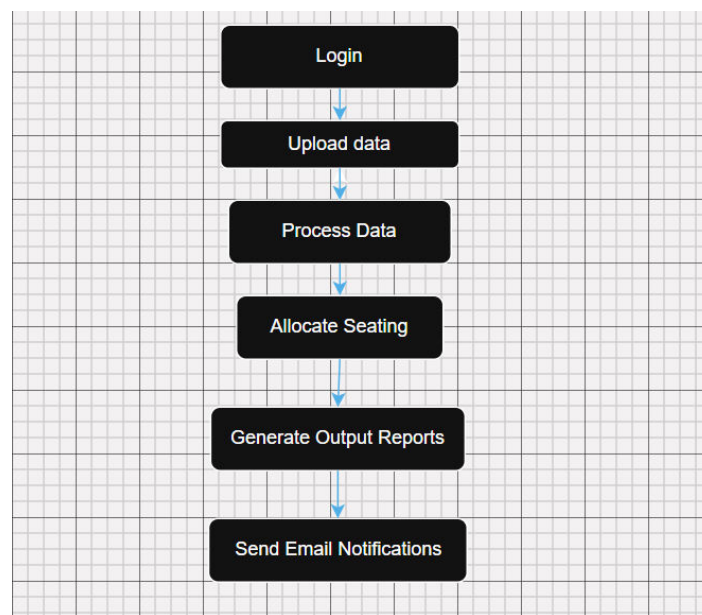
Allocation of examination halls in many institutions is currently done manually using methods such as excel files, written records, and notice boards. The manual arrangement of student records takes too much time and is very inefficient. Communication about invigilation is either delayed or done through unofficial means. Information regarding assigned examination halls is put on the notice boards; therefore, students must find it out themselves when there is heavy examination traffic. There is also no mechanism to monitor how many students have been allocated after the assignment of one hall. Generally, the current method is inefficient as it lacks automation, accuracy, and proper communication. Besides, manual management of huge student records results in duplication and data inconsistency. Any adjustments made at the last minute would cost much time and could result in poor management. Miscommunication and poor coordination will also arise, reducing the level of efficiency in the whole process.

III. PROPOSED SYSTEM

The proposed Automatic Examination Management System is an online system intended to streamline and facilitate the processes concerning allocation of examination halls and invigilation management. The system provides a convenient solution replacing the conventional manual approach to arranging and managing data about students, exam halls, and

invigilators. The seating arrangement will be made automatically using such parameters as the capacity of the exam hall and number of the students. Within the proposed system, administrators can automatically assign the exam halls and invigilators to certain subjects and examinations. It will also create the seating arrangements that could then be utilized. The system performs another crucial activity, which is the automatic sending of emails. In this way, all students will receive essential data about the location of their exam halls and seat assignments. Invigilators will also get notifications regarding their working schedule. Overall, the proposed system facilitates not only the organization of exams but also significantly simplifies the entire process.

IV.METHODOLOGY

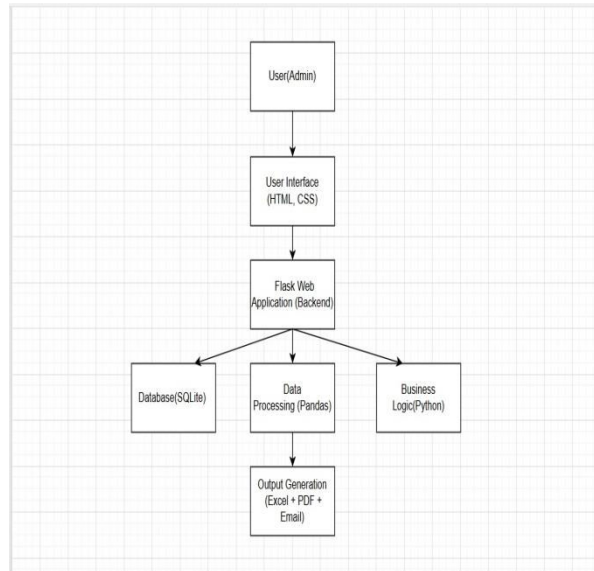


The proposed Exam Seating Allocation System is developed using a systematic and modular methodology to automate the entire exam management process. Initially, the system begins with user authentication, where the user registers using a valid college email and logs in securely with encrypted credentials. Once authenticated, the user uploads student and invigilator data through Excel files, which serve as the primary input for the system. The uploaded data is then preprocessed using data handling techniques, where column names are standardized and inconsistencies are removed to ensure uniformity.

Next, the user configures exam halls by entering details such as hall ID, hall name, and number of benches, which are stored in the database. The core functionality of the system lies in the seating allocation process, where students are grouped based on their branch and arranged using a branch interleaving technique to prevent students from the same branch sitting together. The system then calculates seating capacity based on the number of halls and students per bench, ensuring that all students are accommodated efficiently. Following this, students are assigned to specific halls, benches, and positions (left, right, or center) in a structured manner. Simultaneously, invigilators are allocated to halls based on the number of students, maintaining a ratio of one invigilator per thirty students. After allocation, the system generates outputs in the form of Excel files and hall-wise PDF reports for easy access and verification. Finally, email notifications are sent to both students and invigilators with their respective details using an SMTP-based mailing system.

This step-by-step methodology ensures accuracy, efficiency, and automation, significantly reducing manual effort and minimizing errors in exam hall management.

V. SYSTEM ARCHITECTURE

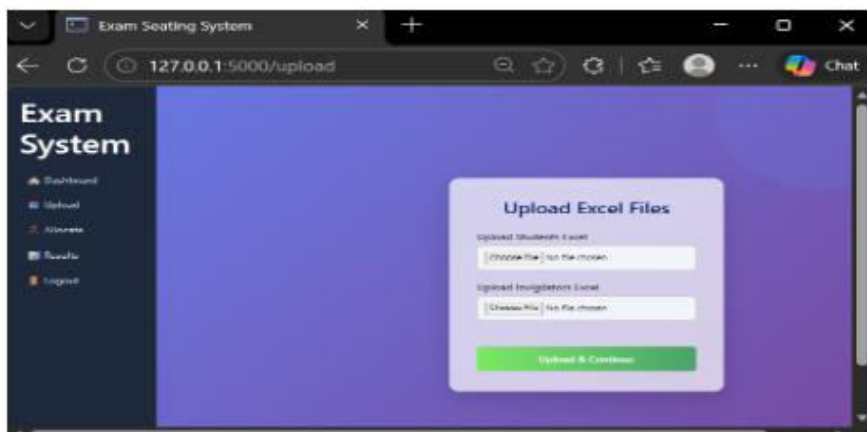


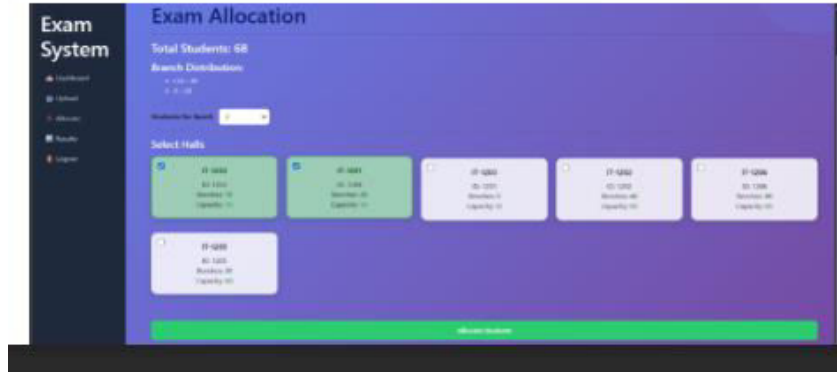
The system architecture is designed using a simple client-server approach that makes the application easy to use and maintain. The frontend acts as the interaction layer where the user performs actions like logging in, uploading files, and managing hall details. These actions are sent as requests to the backend through standard web protocols like HTTP.

The backend, built using Flask, handles all the core operations of the system. It processes user inputs, validates the data, and performs important tasks such as seating allocation and invigilator assignment. The logic is structured in a way that each module works independently but also integrates smoothly with other parts of the system.

A lightweight database is used to store user and hall information securely. At the same time, student and invigilator data are taken through Excel files, which makes the system flexible and easy to use without requiring complex database entries. The data is cleaned and processed before being used in allocation to avoid errors. Once processing is completed, the system generates outputs in multiple formats such as Excel sheets and PDF files for easy access. An email module is also included to automatically send seating details and duty assignments, reducing manual communication. Overall, the architecture focuses on simplicity, efficiency, and practical usability. It ensures that even with basic resources, the system can handle real-time exam allocation tasks effectively.

VI. RESULTS AND OUTPUT





1	Roll_No	Name	Branch	Section	Email	Hall	Bench_No	Position
2	22AG1A1201	ANJULAM ABHINAV	IT	A	gautham@gmail.com	IT-1203	1	Left
3	22AG1A1203	KANIGERI SHIVA KUMAR	CSE	A	gautham@gmail.com	IT-1203	1	Right
4	22AG1A1202	AEDUDOLA DHARANI PRIYA REDDY	IT	A	gautham@gmail.com	IT-1209	2	Left
5	22AG1A1231	KANTHETHI LAKSHMI SAI GEETHIKA	CSE	A	gautham@gmail.com	IT-1203	2	Right
6	22AG1A1203	AKKEM KARUNAKAR	IT	A	gautham@gmail.com	IT-1203	3	Left
7	22AG1A1232	KONDA SOWMYA	CSE	A	gautham@gmail.com	IT-1203	3	Right
8	22AG1A1204	B RARESH REDDI	IT	A	gautham@gmail.com	IT-1203	4	Left
9	22AG1A1233	MADANU NIKHIL	CSE	A	gautham@gmail.com	IT-1203	4	Right
10	22AG1A1205	B.S.V.K.A.CHANDRANNAAS	IT	A	gautham@gmail.com	IT-1203	5	Left
11	22AG1A1734	MISHANKAI ADITYA	CSE	A	gautham@gmail.com	IT-1209	5	Right
12	22AG1A1206	BANOTHU AKASH	IT	A	gautham@gmail.com	IT-1209	6	Left
13	22AG1A1235	MAMIDI NISHANTH	CSE	A	gautham@gmail.com	IT-1203	6	Right
14	22AG1A1207	BEGARI SATHWIKYA	IT	A	gautham@gmail.com	IT-1203	7	Left
15	22AG1A1236	MERUGU DIANARAJ	CSE	A	gautham@gmail.com	IT-1203	7	Right
16	22AG1A1208	BHUKYA SUNITHA	IT	A	gautham@gmail.com	IT-1203	8	Left
17	22AG1A1237	MOHID ZAIN UR RAHMAN	CSE	A	gautham@gmail.com	IT-1203	8	Right
18	22AG1A1209	BIRAMPALLY SRICHANDRA PRASAD RAO	IT	A	gautham@gmail.com	IT-1203	9	Left
19	22AG1A1238	MOKKARALA KODANDA SATYA KAILASH	CSE	A	gautham@gmail.com	IT-1203	9	Right
20	22AG1A1210	BODDU ANIL KUMAR	IT	A	gautham@gmail.com	IT-1203	10	Left
21	22AG1A1239	MORTHALA YODITHA	CSE	A	gautham@gmail.com	IT-1203	10	Right
22	22AG1A1211	BODIRE ANVILA	IT	A	gautham@gmail.com	IT-1201	1	Left
23	22AG1A1212	ALLURI SURESH PRASAD	CSE	A	gautham@gmail.com	IT-1201	1	Right

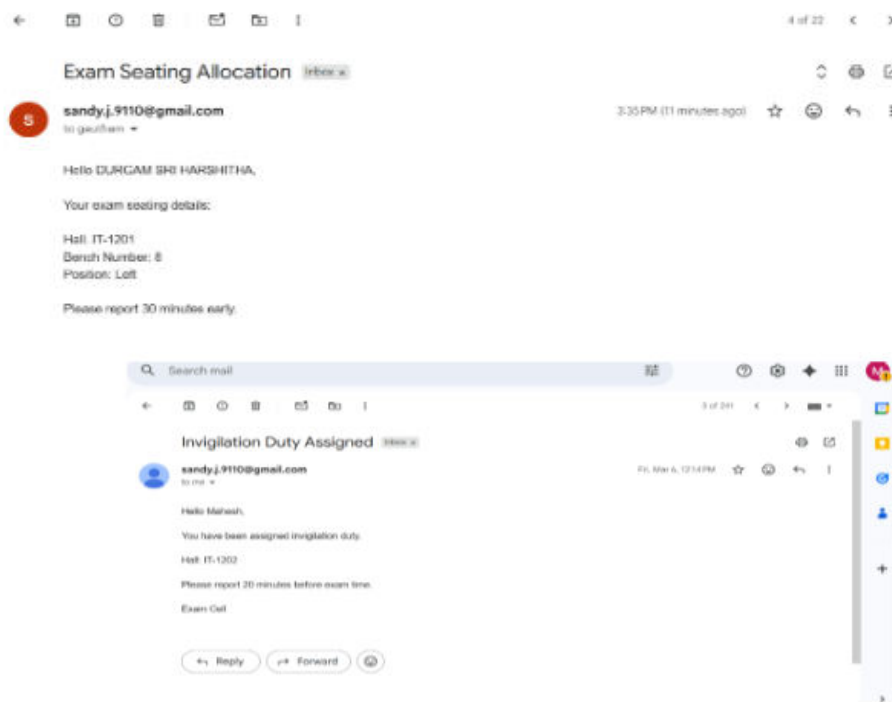
1	Invigilator_ID	Invigilator_Name	Departme	Email	Hall
2	101	Navya	IT	goonournavya@gmail.com	IT-1201
3	105	Hareeshwar	CSE	devunipallyhareeshwar@gmail.com	IT-1201
4	103	Anusri	ECE	devisettianusri@gmail.com	IT-1203
5	106	Mahesh	CSE	jajalamahesh57@gmail.com	IT-1202
6					
7					
8					

Seating Arrangement - IT-1201

Roll No	Name	Branch	Section	Position
22AG1A1211	BODIRE ANVILA	IT	A	1
22AG1A1201	ANJULAM ABHINAV	IT	A	2
22AG1A1239	MORTHALA YODITHA	CSE	A	3
22AG1A1231	KANTHETHI LAKSHMI SAI GEETHIKA	CSE	A	4
22AG1A1203	AKKEM KARUNAKAR	IT	A	5
22AG1A1205	B.S.V.K.A.CHANDRANNAAS	IT	A	6
22AG1A1207	BEGARI SATHWIKYA	IT	A	7
22AG1A1209	BIRAMPALLY SRICHANDRA PRASAD RAO	IT	A	8
22AG1A1210	BODDU ANIL KUMAR	IT	A	9
22AG1A1212	ALLURI SURESH PRASAD	CSE	A	10
22AG1A1232	KONDA SOWMYA	CSE	A	11
22AG1A1233	MADANU NIKHIL	CSE	A	12
22AG1A1235	MAMIDI NISHANTH	CSE	A	13
22AG1A1236	MERUGU DIANARAJ	CSE	A	14
22AG1A1237	MOKKARALA KODANDA SATYA KAILASH	CSE	A	15
22AG1A1238	MOKKARALA KODANDA SATYA KAILASH	CSE	A	16
22AG1A1239	MORTHALA YODITHA	CSE	A	17
22AG1A1202	AEDUDOLA DHARANI PRIYA REDDY	IT	A	18
22AG1A1204	B RARESH REDDI	IT	A	19
22AG1A1206	BANOTHU AKASH	IT	A	20
22AG1A1208	BHUKYA SUNITHA	IT	A	21
22AG1A1209	BIRAMPALLY SRICHANDRA PRASAD RAO	IT	A	22
22AG1A1210	BODDU ANIL KUMAR	IT	A	23
22AG1A1211	BODIRE ANVILA	IT	A	24
22AG1A1212	ALLURI SURESH PRASAD	CSE	A	25
22AG1A1231	KANTHETHI LAKSHMI SAI GEETHIKA	CSE	A	26
22AG1A1232	KONDA SOWMYA	CSE	A	27
22AG1A1233	MADANU NIKHIL	CSE	A	28
22AG1A1235	MAMIDI NISHANTH	CSE	A	29
22AG1A1236	MERUGU DIANARAJ	CSE	A	30
22AG1A1237	MOKKARALA KODANDA SATYA KAILASH	CSE	A	31
22AG1A1238	MOKKARALA KODANDA SATYA KAILASH	CSE	A	32
22AG1A1239	MORTHALA YODITHA	CSE	A	33
22AG1A1203	AKKEM KARUNAKAR	IT	A	34
22AG1A1205	B.S.V.K.A.CHANDRANNAAS	IT	A	35
22AG1A1207	BEGARI SATHWIKYA	IT	A	36
22AG1A1209	BIRAMPALLY SRICHANDRA PRASAD RAO	IT	A	37
22AG1A1210	BODDU ANIL KUMAR	IT	A	38
22AG1A1212	ALLURI SURESH PRASAD	CSE	A	39
22AG1A1231	KANTHETHI LAKSHMI SAI GEETHIKA	CSE	A	40
22AG1A1232	KONDA SOWMYA	CSE	A	41
22AG1A1233	MADANU NIKHIL	CSE	A	42
22AG1A1235	MAMIDI NISHANTH	CSE	A	43
22AG1A1236	MERUGU DIANARAJ	CSE	A	44
22AG1A1237	MOKKARALA KODANDA SATYA KAILASH	CSE	A	45
22AG1A1238	MOKKARALA KODANDA SATYA KAILASH	CSE	A	46
22AG1A1239	MORTHALA YODITHA	CSE	A	47
22AG1A1202	AEDUDOLA DHARANI PRIYA REDDY	IT	A	48
22AG1A1204	B RARESH REDDI	IT	A	49
22AG1A1206	BANOTHU AKASH	IT	A	50
22AG1A1208	BHUKYA SUNITHA	IT	A	51
22AG1A1209	BIRAMPALLY SRICHANDRA PRASAD RAO	IT	A	52
22AG1A1210	BODDU ANIL KUMAR	IT	A	53
22AG1A1212	ALLURI SURESH PRASAD	CSE	A	54
22AG1A1231	KANTHETHI LAKSHMI SAI GEETHIKA	CSE	A	55
22AG1A1232	KONDA SOWMYA	CSE	A	56
22AG1A1233	MADANU NIKHIL	CSE	A	57
22AG1A1235	MAMIDI NISHANTH	CSE	A	58
22AG1A1236	MERUGU DIANARAJ	CSE	A	59
22AG1A1237	MOKKARALA KODANDA SATYA KAILASH	CSE	A	60
22AG1A1238	MOKKARALA KODANDA SATYA KAILASH	CSE	A	61
22AG1A1239	MORTHALA YODITHA	CSE	A	62
22AG1A1203	AKKEM KARUNAKAR	IT	A	63
22AG1A1205	B.S.V.K.A.CHANDRANNAAS	IT	A	64
22AG1A1207	BEGARI SATHWIKYA	IT	A	65
22AG1A1209	BIRAMPALLY SRICHANDRA PRASAD RAO	IT	A	66
22AG1A1210	BODDU ANIL KUMAR	IT	A	67
22AG1A1212	ALLURI SURESH PRASAD	CSE	A	68
22AG1A1231	KANTHETHI LAKSHMI SAI GEETHIKA	CSE	A	69
22AG1A1232	KONDA SOWMYA	CSE	A	70
22AG1A1233	MADANU NIKHIL	CSE	A	71
22AG1A1235	MAMIDI NISHANTH	CSE	A	72
22AG1A1236	MERUGU DIANARAJ	CSE	A	73
22AG1A1237	MOKKARALA KODANDA SATYA KAILASH	CSE	A	74
22AG1A1238	MOKKARALA KODANDA SATYA KAILASH	CSE	A	75
22AG1A1239	MORTHALA YODITHA	CSE	A	76
22AG1A1202	AEDUDOLA DHARANI PRIYA REDDY	IT	A	77
22AG1A1204	B RARESH REDDI	IT	A	78
22AG1A1206	BANOTHU AKASH	IT	A	79
22AG1A1208	BHUKYA SUNITHA	IT	A	80
22AG1A1209	BIRAMPALLY SRICHANDRA PRASAD RAO	IT	A	81
22AG1A1210	BODDU ANIL KUMAR	IT	A	82
22AG1A1212	ALLURI SURESH PRASAD	CSE	A	83
22AG1A1231	KANTHETHI LAKSHMI SAI GEETHIKA	CSE	A	84
22AG1A1232	KONDA SOWMYA	CSE	A	85
22AG1A1233	MADANU NIKHIL	CSE	A	86
22AG1A1235	MAMIDI NISHANTH	CSE	A	87
22AG1A1236	MERUGU DIANARAJ	CSE	A	88
22AG1A1237	MOKKARALA KODANDA SATYA KAILASH	CSE	A	89
22AG1A1238	MOKKARALA KODANDA SATYA KAILASH	CSE	A	90
22AG1A1239	MORTHALA YODITHA	CSE	A	91
22AG1A1203	AKKEM KARUNAKAR	IT	A	92
22AG1A1205	B.S.V.K.A.CHANDRANNAAS	IT	A	93
22AG1A1207	BEGARI SATHWIKYA	IT	A	94
22AG1A1209	BIRAMPALLY SRICHANDRA PRASAD RAO	IT	A	95
22AG1A1210	BODDU ANIL KUMAR	IT	A	96
22AG1A1212	ALLURI SURESH PRASAD	CSE	A	97
22AG1A1231	KANTHETHI LAKSHMI SAI GEETHIKA	CSE	A	98
22AG1A1232	KONDA SOWMYA	CSE	A	99
22AG1A1233	MADANU NIKHIL	CSE	A	100

Seating Arrangement - IT-1202

Roll No	Name	Branch	Section	Position
22AG1A1202	AEDUDOLA DHARANI PRIYA REDDY	IT	A	1
22AG1A1204	B RARESH REDDI	IT	A	2
22AG1A1206	BANOTHU AKASH	IT	A	3
22AG1A1208	BHUKYA SUNITHA	IT	A	4
22AG1A1209	BIRAMPALLY SRICHANDRA PRASAD RAO	IT	A	5
22AG1A1210	BODDU ANIL KUMAR	IT	A	6
22AG1A1212	ALLURI SURESH PRASAD	CSE	A	7
22AG1A1231	KANTHETHI LAKSHMI SAI GEETHIKA	CSE	A	8
22AG1A1232	KONDA SOWMYA	CSE	A	9
22AG1A1233	MADANU NIKHIL	CSE	A	10
22AG1A1235	MAMIDI NISHANTH	CSE	A	11
22AG1A1236	MERUGU DIANARAJ	CSE	A	12
22AG1A1237	MOKKARALA KODANDA SATYA KAILASH	CSE	A	13
22AG1A1238	MOKKARALA KODANDA SATYA KAILASH	CSE	A	14
22AG1A1239	MORTHALA YODITHA	CSE	A	15
22AG1A1203	AKKEM KARUNAKAR	IT	A	16
22AG1A1205	B.S.V.K.A.CHANDRANNAAS	IT	A	17
22AG1A1207	BEGARI SATHWIKYA	IT	A	18
22AG1A1209	BIRAMPALLY SRICHANDRA PRASAD RAO	IT	A	19
22AG1A1210	BODDU ANIL KUMAR	IT	A	20
22AG1A1212	ALLURI SURESH PRASAD	CSE	A	21
22AG1A1231	KANTHETHI LAKSHMI SAI GEETHIKA	CSE	A	22
22AG1A1232	KONDA SOWMYA	CSE	A	23
22AG1A1233	MADANU NIKHIL	CSE	A	24
22AG1A1235	MAMIDI NISHANTH	CSE	A	25
22AG1A1236	MERUGU DIANARAJ	CSE	A	26
22AG1A1237	MOKKARALA KODANDA SATYA KAILASH	CSE	A	27
22AG1A1238	MOKKARALA KODANDA SATYA KAILASH	CSE	A	28
22AG1A1239	MORTHALA YODITHA	CSE	A	29
22AG1A1203	AKKEM KARUNAKAR	IT	A	30
22AG1A1205	B.S.V.K.A.CHANDRANNAAS	IT	A	31
22AG1A1207	BEGARI SATHWIKYA	IT	A	32
22AG1A1209	BIRAMPALLY SRICHANDRA PRASAD RAO	IT	A	33
22AG1A1210	BODDU ANIL KUMAR	IT	A	34
22AG1A1212	ALLURI SURESH PRASAD	CSE	A	35
22AG1A1231	KANTHETHI LAKSHMI SAI GEETHIKA	CSE	A	36
22AG1A1232	KONDA SOWMYA	CSE	A	37
22AG1A1233	MADANU NIKHIL	CSE	A	38
22AG1A1235	MAMIDI NISHANTH	CSE	A	39
22AG1A1236	MERUGU DIANARAJ	CSE	A	40
22AG1A1237	MOKKARALA KODANDA SATYA KAILASH	CSE	A	41
22AG1A1238	MOKKARALA KODANDA SATYA KAILASH	CSE	A	42
22AG1A1239	MORTHALA YODITHA	CSE	A	43
22AG1A1203	AKKEM KARUNAKAR	IT	A	44
22AG1A1205	B.S.V.K.A.CHANDRANNAAS	IT	A	45
22AG1A1207	BEGARI SATHWIKYA	IT	A	46
22AG1A1209	BIRAMPALLY SRICHANDRA PRASAD RAO	IT	A	47
22AG1A1210	BODDU ANIL KUMAR	IT	A	48
22AG1A1212	ALLURI SURESH PRASAD	CSE	A	49
22AG1A1231	KANTHETHI LAKSHMI SAI GEETHIKA	CSE	A	50
22AG1A1232	KONDA SOWMYA	CSE	A	51
22AG1A1233	MADANU NIKHIL	CSE	A	52
22AG1A1235	MAMIDI NISHANTH	CSE	A	53
22AG1A1236	MERUGU DIANARAJ	CSE	A	54
22AG1A1237	MOKKARALA KODANDA SATYA KAILASH	CSE	A	55
22AG1A1238	MOKKARALA KODANDA SATYA KAILASH	CSE	A	56
22AG1A1239	MORTHALA YODITHA	CSE	A	57
22AG1A1203	AKKEM KARUNAKAR	IT	A	58
22AG1A1205	B.S.V.K.A.CHANDRANNAAS	IT	A	59
22AG1A1207	BEGARI SATHWIKYA	IT	A	60
22AG1A1209	BIRAMPALLY SRICHANDRA PRASAD RAO	IT	A	61
22AG1A1210	BODDU ANIL KUMAR	IT	A	62
22AG1A1212	ALLURI SURESH PRASAD	CSE	A	63
22AG1A1231	KANTHETHI LAKSHMI SAI GEETHIKA	CSE	A	64
22AG1A1232	KONDA SOWMYA	CSE	A	65
22AG1A1233	MADANU NIKHIL	CSE	A	66
22AG1A1235	MAMIDI NISHANTH	CSE	A	67
22AG1A1236	MERUGU DIANARAJ	CSE	A	68
22AG1A1237	MOKKARALA KODANDA SATYA KAILASH	CSE	A	69
22AG1A1238	MOKKARALA KODANDA SATYA KAILASH	CSE	A	70
22AG1A1239	MORTHALA YODITHA	CSE	A	71
22AG1A1203	AKKEM KARUNAKAR	IT	A	72
22AG1A1205	B.S.V.K.A.CHANDRANNAAS	IT	A	73
22AG1A1207	BEGARI SATHWIKYA	IT	A	74
22AG1A1209	BIRAMPALLY SRICHANDRA PRASAD RAO	IT	A	75
22AG1A1210	BODDU ANIL KUMAR	IT	A	76
22AG1A1212	ALLURI SURESH PRASAD	CSE	A	77
22AG1A1231	KANTHETHI LAKSHMI SAI GEETHIKA	CSE	A	78
22AG1A1232	KONDA SOWMYA	CSE	A	79
22AG1A1233	MADANU NIKHIL	CSE	A	80



VII CONCLUSION

The Automatic Examination Management System successfully automates the process of managing examination seating and invigilation duties. It reduces the complexity involved in manual arrangements by providing a streamlined workflow from data upload to final output generation. The system minimizes human errors and saves significant time, making it suitable for handling large volumes of student data efficiently.

The application integrates various functionalities such as hall management, student allocation, and invigilator assignment into a single platform. The use of branch interleaving ensures fair distribution of students, while seating allocation logic optimizes the usage of available resources. Additionally, the system generates outputs in Excel and PDF formats, making it easy for institutions to manage and distribute information.

The implementation of technologies like Flask, Pandas, SQLite, and ReportLab enables efficient data processing, storage, and report generation. The email notification feature further enhances the system by ensuring timely communication of seating details and invigilation duties.

In conclusion, the project improves efficiency, accuracy, and transparency in exam management. It reduces manual effort, ensures organized allocation, and provides clear outputs for users.

VIII. FUTURE SCOPE

The System can be further enhanced in several ways to make it more powerful and adaptable to real-world requirements. One of the key improvements can be the development of a mobile-friendly or dedicated mobile application so that students and invigilators can easily access their seating and duty details on their smartphones. This would improve accessibility and user convenience.

Another possible enhancement is the integration of a real-time dashboard for administrators, where they can monitor seating allocations, hall usage, and invigilator assignments dynamically. This can help in making quick decisions during exam situations and improve overall coordination.

Advanced features like QR code-based hall entry or student verification can be added to improve security and reduce chances of malpractice during exams. Similarly, role-based access control can be introduced so that different users such as admin staff, faculty, and exam coordinators have different levels of permissions.

In addition, the email notification system can be upgraded to include SMS or app notifications for faster communication. Integration with cloud storage can also be considered to store data securely and allow access from anywhere. Overall, these enhancements will not only improve the efficiency and usability of the system but also make it more robust, scalable, and suitable for handling complex exam management scenarios in the future.

REFERENCES

[1] Manoj S, Dilip Kumar Maripuri

“An Intelligent Examination System for Academic Institutions ,” IEEE International Conference on Recent Advances in computing and Systems, 2025.

[2] Anith Kumar Vadlamudi;Sushma Thigulla;Meghana Veeramachaneni;Shiva Krishna Chaitanya Reddy Vangimalli;Bhaskara Rao Pondugala

“Exam Invigilation Scheduler ,” 7th International Conference on Circuit Power and Computing Technologies (ICCPCT), 2024

[3] Supriya Khaitan Chandra; Snehal Pandurang Kamble; Savani Sachin Dalvi; Snehal Shahaji Mane; Devika Jayakumar Nair

“A Comparison of Genetic Algorithm Operators for the Seat Allocation Problem ,” 4th International Conference on Advances in Computing, Communication Control and Networking (ICAC3N) , 2022.

[4] Apurva Inamdar;Anand Gangar;Arun Gupta;Varsha Shrivastava

“Automatic Exam Seating & Teacher Duty Allocation System,” Second International Conference on Inventive Communication and Computational Technologies (ICICCT), 2018.

[5]Pandiaraj Kadarkarai, Munibhagyala Nikhil, Panditi Sukumar, Edagotti Sathish Kumar, Ginkala Muneswar

“Automated Seating Arrangement for Conducting Examination, ” IEEE International Conference on Multi-Agent Systems for Collaborative Intelligence (ICMSCI), 2018.



INTERNATIONAL
STANDARD
SERIAL
NUMBER
INDIA



INTERNATIONAL JOURNAL OF INNOVATIVE RESEARCH

IN SCIENCE | ENGINEERING | TECHNOLOGY

 9940 572 462  6381 907 438  ijirset@gmail.com



www.ijirset.com

Scan to save the contact details